



Advanced Airborne Systems

NEW!
Version 8.0

Our World is **Magnetic**.

Optically Pumped Potassium GSMP-35A is the most Advanced Airborne Sensor today.

It offers a number of benefits for towed and fixed wing configurations, including:

All weather, highest sensitivity for enhanced resolution of geological and cultural features in a variety of applications.

Highest absolute accuracy (varying by no more than +/- 0.1 nT between sensors)

Fast sampling rate 20 Hz

VLF-EM Option available

Insensitivity to microphonics

Lowest maintenance (no realignments)

Complete Systems are available:

- Bird
- Radar Altimeter
- GPS (20 Hz)
- Data Acquisition

As well, GEM offers advanced base stations:
GSM-19W Overhauser
GSMP-35 Potassium

All of these technologies come complete with two year warranty.



Magnetometer GSMP-35A(B), Vertical Gradiometer GSMP-35GA(B) and Tri-Axial Gradiometers GSMP-35GA3(B)

based on the latest GSMP-35A V8.0 high resolution airborne system.

The worldwide application of airborne magnetic and gradiometric data is growing - driven by the increasing demand for high-resolution data for mineral and oil exploration; UXO; and other requirements.

Major industry requirements for airborne mapping include durability, accuracy, and sensitivity.

GEM is pleased to offer a family of magnetic-based solutions featuring the highest resolution magnetometer / gradiometer airborne system available.

Standard configurations in GEM's family include:

- Airborne magnetometers
- Vertical and horizontal gradiometers
- Tri-axial gradiometers

And GEM also offers complete configurations of airborne solutions, such as:

- Bird
- Radar Altimeter
- GPS
- Data Acquisition
- Installation assistance

And, moreover, the company also supports both fixed-wing and helicopter applications with a range of systems already implemented.

Airborne Magnetometer Effect

The GSMP-35A magnetometer is the core of GEM's airborne solutions. The technology is based on a unique optically pumped Potassium sensor - offering an order-of magnitude increase in resolution over other systems. It also provides:

- Minimal "heading" errors
- Highest absolute accuracy
- Decreased maintenance costs

These advantages - plus GEM's reputation as a proven supplier of advanced technologies - make the GSMP-35A a key solution to consider for your next airborne installation.

Key Components

The GSMP technology comprises:

- Sensor head
- Radio Frequency (RF) pre-amplifier and drive electronics module/processor
- Cable (1 to 10m - standard 5m) to separate sensor and electronics for noise elimination
- Optional signal processor / console and cable

The sensor deploys as a single unit, or in combination with other sensors.

"We were very impressed with the airborne equipment and how well it performed; You have designed and built a great piece of equipment!"

Alan Davies, P.Eng., V.P. Exploration, Talmora Diamond Inc.

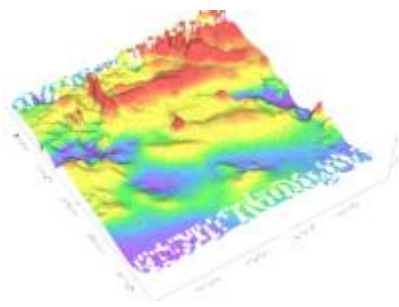
Vertical / Horizontal Gradiometer

Benefits of Gradiometer:

- * Freedom from diurnal effects and noise;
- * "Real" analytic signal computed from measured gradients can be used for more accurate track positioning;
- * Improved definition of structures that are non parallel to survey lines.

GEM's vertical and horizontal gradiometers are designed to fit the requirements of those needing high sensitivity, high accuracy magnetic results.

Tri-Axial Magnetic Gradiometer



GEM's Tri-Axial Gradiometer was the first 4-sensor gradiometer developed in the world back in early 1980's using Overhauser technology. In this configuration four Potassium units can be installed in a special "bird" with two fins at the tips of an imaginary tetrahedron to allow for measurement of Total Magnetic Field and the gradients in three directions:

- * Vertical gradient;
- * Horizontal gradient (along-the-track);
- * Horizontal gradient (across-the-track).

Horizontal gradient measurements are increasingly popular for providing details about the lateral extent of subsurface anomalies located between survey lines. Vertical gradients can assist significantly in identifying geologic / structural contacts and near-surface targets (such as UXO).

Other benefits include: providing a very stable and noise-free platform for acquiring high resolution data; delivers information for reducing of positioning errors using onboard GPS, and no magnetic compensation required.

Airborne Base Station Configurations

Another area of application for GEM's magnetometers is in airborne base station monitoring. Customers have the choice of working with GSMP-35A or Overhauser (GSM-19W).

The GSMP-35A implementation offers advantages for surveys where very high resolution diurnal corrections are needed. GSM-19W implementations deliver good resolution and economical pricing.

Both implementations share a number of advanced features (introduced in GEM's v7.0 firmware release), including:

- * Precise time synchronization of field and base station units using a built-in GPS option. This capability is particularly important for working in noisy magnetic conditions and provides the highest accuracy possible;
- * Flexible scheduling (up to 30 on / off periods). Simply define a series of intervals and the base station will turn itself on as you need. This mode provides the greatest flexibility for longer surveys where leaving your base station on increases efficiency. Immediate start and daily modes are also provided.

Benefitting from the Natural Properties of Potassium Optical Pumping

Experienced in Potassium technologies, we feel confident that your next survey will benefit in many ways, including acquisition of:

- * Highest sensitivity data (reflecting Potassium spectrum characteristics and high natural frequency of 7 Hz/nT);
- * Highest absolute accuracy (a variation of only +/- 0.1 nT between sensors makes the GSMP-35A an ideal choice for gradiometer installations);
- * Data with minimal heading errors (reflecting the insensitivity of Potassium to aircraft / bird orientation)
- * Data that is not affected by phonics (low frequency vibration in the audio range).

As well, maintenance costs are minimal in comparison with other systems as key components can be replaced in the field.

Specifications

Performance

Sensitivity: 0.0025 nT @ 1 Hz*
*(optional 0.0007 nT @ 1 Hz GSMP-30A)
Resolution: 0.0001 nT
Absolute Accuracy: +/- 0.1 nT
Range: 20,000 to 120,000 nT
Gradient Tolerance: 35,000 nT/m
Samples at: 1, 5, 10, 20 Hz

Orientation

Sensor Angle: Optimum angle 30° between sensor head axis & field vector.
Orientation: 10° to 80° & 100° to 170°
Heading Error: +/- 0.05 nT between 10° to 80° and 360° full rotation about axis.

Environmental

Operating Temperature: -20°C to +55°C **
Storage Temperature: -70°C to +55°C
Humidity: 0 to 100%, splashproof
** Optional to -40°C

Dimensions and Weights

Sensor: 148mm x 64mm (cylinder type); 1.5 kg
Electronics Box: 229mm x 56mm x 39mm; 0.63 kg

Power

Power Supply: 22 to 32 V DC
Power Requirements: approx. 50 W at start up, dropping to 12 W after warm-up
Power Consumption: 12 W typical at 20°C
Warm-up time: <15 min. @ 20°C

Outputs

20Hz RS-232 output with comprehensive Windows Personal Computer (PC) software for data acquisition and display.

Outputs UTC time, magnetic field, lock indication, heater, field reversal, position (latitude, longitude or UTM), GPS altitude, # of satellites and differential GPS

Components

Sensor, pre-amplifier box, 5m sensor / pre-amplifier cable, manual & ship case.



GEM Systems, Inc.

135 Spy Court Markham, ON Canada L3R 5H6
Phone: 905 752 2202 • Fax: 905 752 2205
Email: info@gemsys.ca • Web: www.gemsys.ca